

Enteo LiveManage

Productivity Protection Through Automated User State Migration

The user state refers to the files and settings defined by the end user. There are few standards for the storage of user states. The lack of such standards means that considerable effort is required to backup and transfer user states. The resulting failure to make backups means that there is a considerable risk of data being lost. According to IDC, 60 percent of company data is stored locally and is therefore not included in data backups. The complexity of the problem becomes increasingly apparent when migrations or computer replacements are undertaken. The effort required to provide users with their data following successful installations is often reason enough not to perform a migration or replace computers.

In order to avoid restricting employee productivity and to protect important data, companies require a high-performance migration solution for user states. By automating all necessary backup and restoring processes and integrating this solution into the superordinate software management system, IT administrators gain the necessary flexibility to react quickly to hardware and software malfunctions, malware threats, and internal company changes. It is essential to maintain a detailed record of the application data and settings to be backed up in order to establish a basis for standardizing the environment. Particularly in enterprises, the extended functions for storage capacity reduction and data security are of central importance.

Reduction in Downtimes and Support Costs

Enteo LiveManage allows you to fully-automate the backup and migration of

user states for all users on a computer. Enteo LiveManage is deployed and executed in the background ('silently'), so that users never need interact with the program. The Enteo LiveManage technology automatically records all user data and settings, for example desktop layout, personalized adjustments, document templates, network connections as well as files and folder structures. The Registry Selector also takes registry keys and values into account for proprietary applications.

You can choose between local, LAN, WAN or removable media as locations for saving the user state. Various file versions can be recovered. Personalized user environments can therefore be restored in no time at all in the case of malfunctions or in the context of migration projects, thus reducing productivity losses and keeping cost-intensive on-site support to a minimum.

Focus on Enterprise Environments

Enteo LiveManage was designed to address the particular concerns related to enterprise migrations and continuity management. The solution features excellent scalability and can be fully automated by means of Enteo v6 NetInstall scripts. In addition, Enteo LiveManage has extended functionalities predestined for use in enterprises. These allow you to reduce the storage space required for the user state with delta backups which, particularly in large environments, are often essential. In addition, the HTTP support enables data to be stored on web servers without providing access to the company network. Sensitive documents and settings are encrypted at your temporary



KEY BENEFITS

- Employee productivity maintenance
- Lowered support costs
- Fast data recovery following malfunctions
- Smooth migration even in large environments
- Complete automation of all user state-related tasks
- System standardization
- Protection of sensitive data and settings
- Simple integration using NetInstall version 6

KEY FEATURES

- Automated recording of all user data and settings
- Silent deployment and execution
- Local, LAN, WAN or removable media as storage locations
- Recovery of various file versions
- Delta backups of the user state
- Registry selector for keys and values of proprietary applications
- HTTP support for backup on web servers
- Password-protected file recovery
- Encryption of data at temporary storage locations
- Rule-based migration

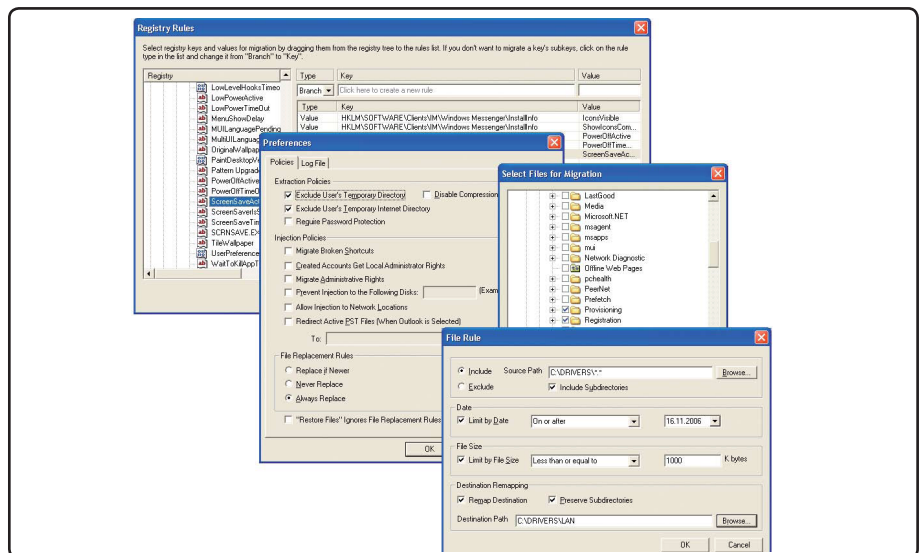
workstation and migrations to new systems can be restricted by password protection.

Standardization Through Rule-Based Migration

With Enteo LiveManage, complicated scripts for migrating user settings are a thing of the past. Even without expert knowledge, just a few mouse clicks are needed to select the users and applications to be recorded by Enteo LiveManage. Using predefined and configurable rules, IT administrators can decide exactly which files from the defined applications shall be migrated and where they shall be saved – even for migrations between different operating systems and application versions. Audit logs record the capturing or restoring of all files and settings. This enables you to achieve a standardized environment that is easier and more economic to maintain.

Additional Malware Protection

Owing to the ubiquitous threat of viruses, worms, spyware and the like, leading security experts recommend that companies automate processes for deleting hard disks and reinstalling operating systems. By combining Enteo LiveManage with its tools for malware analysis, you can achieve an increased



Any number of rules can be defined easily with just a few mouse clicks

level of security and, at the same time, ensure employee productivity.

As soon as a malware infection has been discovered, you can have the anti-virus scanner clean the stored data. With Enteo v6 OS deployment, the infected systems are patched in next to no time with a clean operating system and Enteo LiveManage automatically restores the personalized application environment. The scheduled backups provided by Enteo LiveManage also form the ideal basis for a routine reinstallation of all systems, which will stifle malware infections at their very outset.

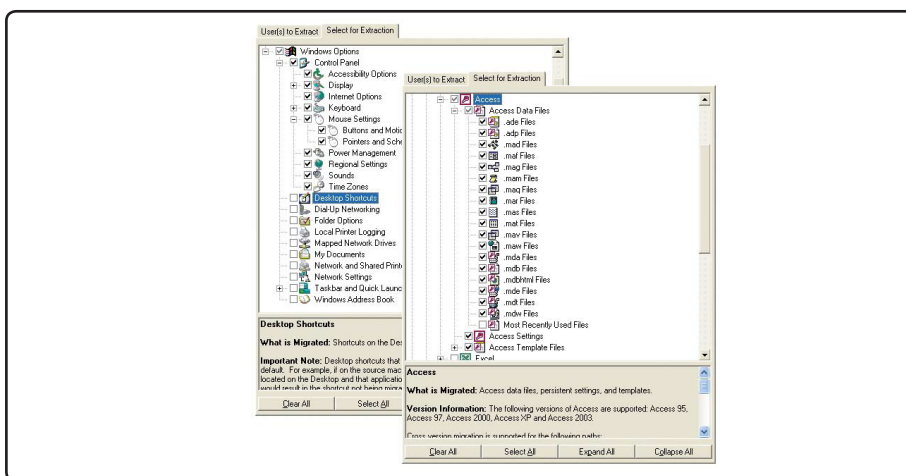
SYSTEM REQUIREMENTS

- Server
 - Enteo v6 NetInstall
 - (NetInstall 5.7 and 5.8 also supported)
- Client
 - Windows 98, ME, Windows NT4,
 - Windows 2000 Professional,
 - Windows XP (NetInstall 5.7 or 5.8)
 - Windows 2000 Professional,
 - Windows XP (Enteo v6 NetInstall)

MORE INFORMATION

- USA
 - Sales@frontrange.com
 - Telephone: +1 866 534 -4100
 - www.frontrange.com
- UK
 - Telephone: +44 (0)118.951.8000
 - www.frontrange.co.uk
- Germany
 - sales.enteo@frontrange.com
 - Telefon: +49 1802 340 190
 - www.frontrange.de
- Switzerland, Austria, Italy
 - CHsales.enteo@frontrange.com
 - Telefon: +41 43 388 40 90

www.frontrange.com



Predefined rules for the migration and transfer of user data and settings