

# FrontRange DSM OS Deployment™

## Boosting Efficiency with Automated Operating System Deployment

Expired leasing agreements, hardware defects and migrations repeatedly require the complete reinstallation of desktops, laptops and servers – analysts put the annual figure at 33% of all devices. Manual installation can be a real cost factor even when just a single system is involved due to the time and productivity lost in the process. So it is all the more evident that a large-scale operating system rollout demands full automation of the installation process.

Nowadays, companies must rely on fully automated processes to take care of their operating system deployment like Windows 7, including the assignment of an appropriate start environment and reboot management. To make sure the investment is secure, the solution also needs to provide 32- and 64-bit support. Furthermore, only an intelligent solution can package the operating system, drivers and configurations such that the IT staff's workload is permanently reduced. Functions for timed rollouts and narrowband WANs are also crucial to ensure fast distribution that does not tie up many resources.

### Automated Distribution for 32-bit and 64-bit Operating Systems

FrontRange DSM OS Deployment™ performs all operating system installation steps fully automatically, based on automatic control via PXE and Wake-on-LAN. FrontRange DSM OS Deployment supports all common hardware platforms and automatically assigns the correct start environment (DOS, Linux, Mac, 32- or 64-bit Windows PE) for installing the operating system desired. FrontRange Desktop & Server Management not only supports installation of all current Microsoft Windows operating systems, but it is also ready for Windows 7 deployments (migration or through hardware refresh). According to analyst Forrester, 46% of organizations have already begun or will begin deploying Windows 7 within the next 12 months and the new operating system is already deployed on 31% of brand-new PCs

purchased by business users; within a year, that number will grow to 83%.\* Whether you are actively planning a Windows 7 deployment this year or not, the influx of the OS onto the corporate network means you need to be able to manage it now. The smart Desktop & Server Management solution from FrontRange can help you both plan and deploy the new operating system, as well as provide the capability to manage PCs on the network that already have the new OS preinstalled. The integrated disk imaging feature further facilitates backups procedures or large-scale system rollouts. The system supports the complete reboot management, including BIOS flash, partitioning and formatting of hard discs through to integrating the PC in your Active Directory. You can also decide whether your DHCP server or FrontRange DSM OS Deployment takes care of IP configuration for the PC. When new PCs are connected to the network, the operating system is automatically installed in compliance with your rules. In the case of software defects, a few mouse clicks are all that it takes to initiate the complete installation process again.

### OS Packaging in a few Mouse Clicks

When using FrontRange DSM NetInstall® and FrontRange DSM OS Deployment to package operating systems, the Software Factory, including Packaging Workbench, is at your disposal to dramatically speed up the process. Software Factory wizards allow you to create a range of package types – from operating systems and applications through to system configurations and drivers – in no time at all. The wizards and the dialog-based script editor provided by the FrontRange Packaging Workbench implement all necessary settings. FrontRange DSM OS Deployment provides ready-made scripts for all common operating systems, and the improved parameter handling results in additional installation flexibility.



IT ASSET MANAGEMENT

### KEY BENEFITS

- Considerably reduces time and staff requirements for Operating System Deployments
- Easy and reliable migration to and management of new operating systems (e.g. Windows 7)
- Eliminates sources of errors
- Increased flexibility due to independence from hardware
- Faster support reactions
- Shorter downtimes for users, especially during system recovery
- Reliable distribution to all company locations
- OS distribution with minimal resource requirements
- Fully integrates into FrontRange Desktop & Server Management

### KEY FEATURES

- Ready-made operating system packages
- Software Factory and Packaging Workbench
- Effective driver management including repository
- Support for DOS, Linux, Mac and Windows PE (32-bit and 64-bit) start environments
- Integrated disk imaging
- Wake-on-LAN support
- Bios flash, partitioning and formatting
- Automatic hardware recognition and integration
- Rule-based and dynamic assignment
- Scheduled OS rollouts
- Delegation and distributed manageability

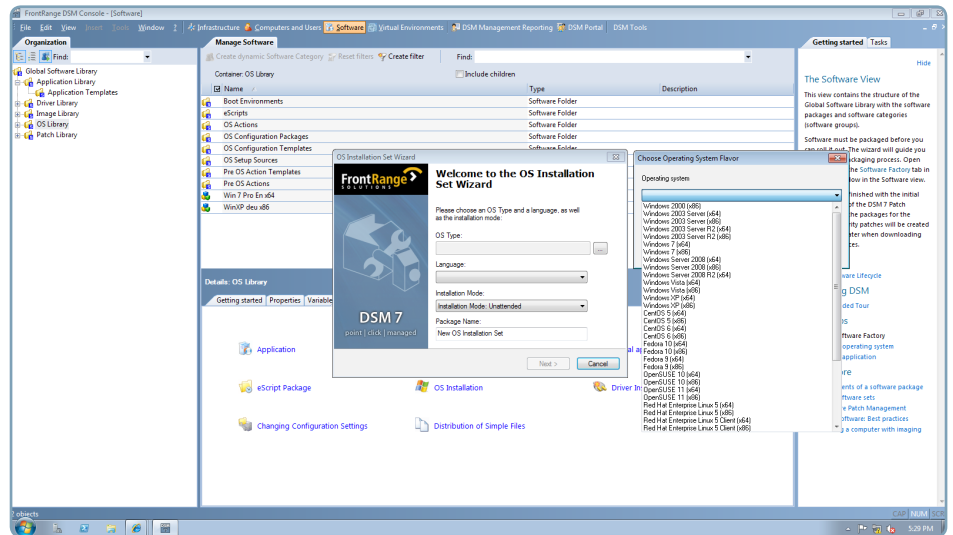
\* Source: Forrester Research: Updated 2010: Windows 7 Commercial Adoption Outlook, November 2010.

What's more, FrontRange Desktop & Server Management provides ready-made configuration files for operating systems upwards of and including Windows 2000, allowing you to manage any and all client settings. The seamless integration of FrontRange DSM OS Deployment in the Software Package Lifecycle boosts your efficiency even further. It enables automation not only of standardized processes, but also of the connections between these processes.

**Perfect Driver Management thanks to Integrated Repository**

Importing and packaging drivers and their correct assignment to individual devices is one of the biggest challenges in operating system deployments. FrontRange Desktop & Server Management integrated driver repository and its straightforward integration of new drivers provide you with a convincing solution for this difficult task. Simply add new drivers to the repository from CD or let FrontRange Desktop & Server Management automatically identify all drivers in a system and integrate them into the database.

The drivers are then packaged and ready for company-wide installation, which can be carried out either dynamically or based on rules. Thanks to special wizards, even plug & play or mass storage devices no longer



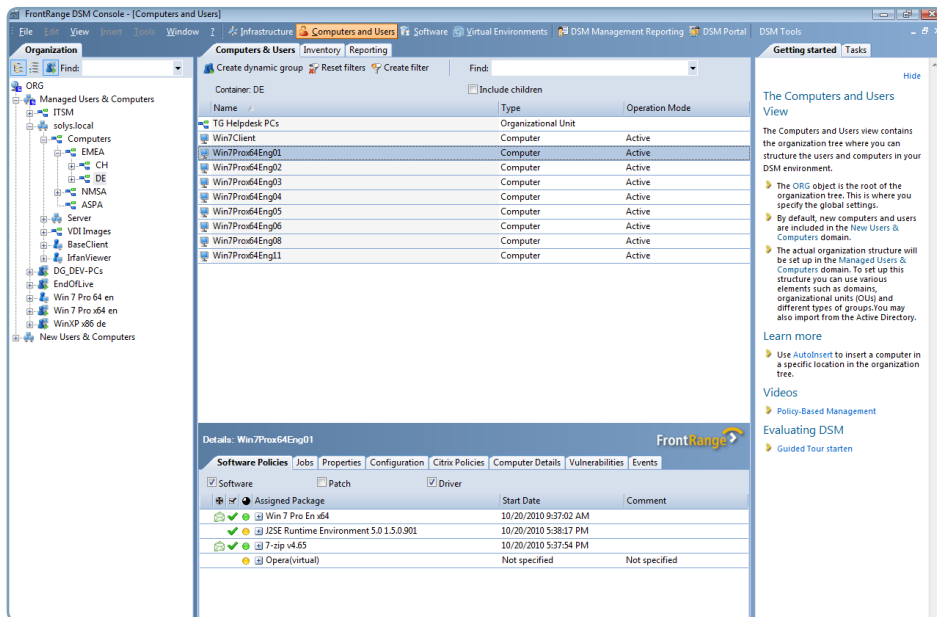
OS wizards facilitate the full automation of the OS installation process

require a separate, time-consuming driver download from the Internet. This completely relieves you of any driver packaging and assignment tasks.

**Minimizing Workload for Employees and Resources**

FrontRange Desktop & Server Management provides a number of functions that ensure that operating system deployments even work in distributed environments and across a large number of devices. They also help put a minimal strain on network resources and users. Rule-based assignment

completely automates the workflow. Installation can be scheduled, so the implementation can take place at nights or on weekends even for remote locations with no need for local staff to be present. FrontRange DSM OS Deployment's intelligent push proxy architecture especially ensures success even for WANs with narrowband connections. The entire infrastructure adjusts flexibly to your company network – even taking into account firewalls.



Compliance Reports ensure complete visibility of the OS rollout

**SYSTEM REQUIREMENTS**

For a complete list of system requirements please refer to [www.frontrange.com/itam/system-requirements](http://www.frontrange.com/itam/system-requirements)

**MORE INFORMATION**

**Corporate Headquarters**

FrontRange Solutions USA Inc.  
5675 Gibraltar Drive,  
Pleasanton, CA 94588  
USA

Tel: 800.776.7889  
and +1 925 398 1800  
[www.frontrange.com](http://www.frontrange.com)