

# FrontRange DSM NetInstall®

## Automated Software Deployment for Increased Flexibility and Reduced Costs

The installation and configuration of all the components of a physical or virtual computer workstation requires various technologies. It is necessary to automate processes across all technologies in order to save valuable time. Every modification made to the software configuration on a computer poses the risk of creating downtimes for the existing software. Companies require effective testing and change management processes in order to ensure trouble-free automation.

Consistent automation, policy-based management and a focus on compliance all constitute indispensable requirements for a Desktop & Server Management system that allows an enterprise to react flexibly while at the same time cutting costs. Important information about the compliance status of the systems can no longer be allowed to get lost in a sea of reports, but instead must be clearly discernible at all times and provide a solid basis for targeted measures. The intelligent automation of packaging tasks is the key to permanently relieving administrators of routine tasks. Various task profiles also demand role- and authorization-based user interfaces, so that each internal or external service provider has the tools at hand for the job.

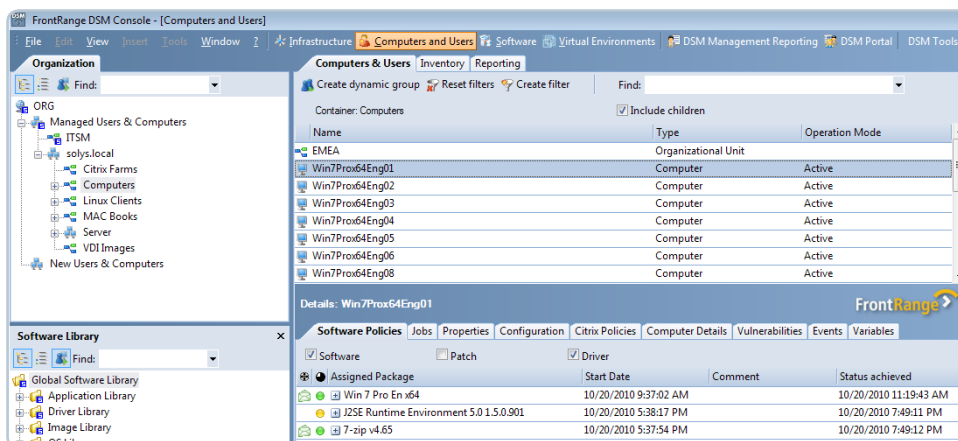
### Efficiency Through Policy-Based Management

FrontRange DSM NetInstall is policy based - in other words, you only have to define the desired status once. The implementation and monitoring is performed automatically by FrontRange DSM. The compliance status is clearly indicated at all times by means of a traffic light system. FrontRange DSM is not restricted to a simple display of whether a system is compliant or non-compliant, but it instead supplies meaningful and detailed information.

FrontRange developed Find & Act to help the administrator. With Find & Act, information can be acted on immediately with relevant measures, as it always makes available actions corresponding to the tasks of the object in question.

### Packaging in a few Mouse Clicks

Software Factory allows you to create various package types using the available wizards in no time at all - from applications to printers and configurations right up to complex drivers. You only need a few mouse clicks to create a package that is ready for distribution. Configuration templates allow the simple creation of configuration packages to administer the various settings of a client.



*Policy-based assignment and compliance-focused evaluation for enhanced transparency and efficiency*

IT ASSET MANAGEMENT

### KEY BENEFITS

- Considerably reduced time and staff expenses for Desktop & Server Management tasks
- Quicker response to changing requirements
- Administrators need only concern themselves with the exceptions to the regular tasks
- Efficient usage through Find & Act
- Current compliance status is visible at all times
- Automation of even of the most complex tasks
- Support for 32- and 64-bit platforms
- Targeted and secure delegation of tasks
- Mapping of centralized and decentralized management structures

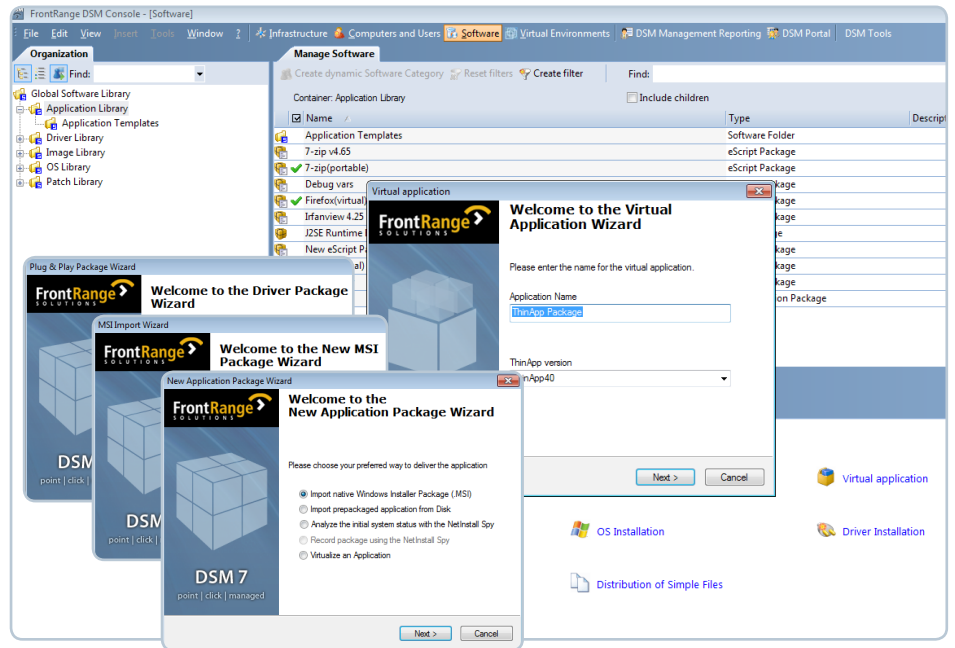
### KEY FEATURES

- Distribution of data performed according to available bandwidth and with checkpoint/restart technology
- Console FrontRange DSM solutions in a single interface
- Policy-based management
- Full transparency of compliance status
- Find & Act operating concept
- Support for 32- and 64-bit platforms
- Integrated Software Factory and Packaging Workbench
- Configuration templates for managing client settings
- Mapping of computer and user roles at installation through software sets
- Component model displays package dependencies
- Management Reporting for Rollouts
- Revision of software packages
- SOAP interface
- Remote/Offline support

FrontRange DSM NetInstall also supports the creation of software sets for the installation of various packages in a specific sequence. The fully integrated software package lifecycle also allows the automation of the links between the standardized processes. In practice this means, for example, that FrontRange DSM automates packaging, the creation of the corresponding policy, as well as the linking of the policy and package.

### Packaging Workbench Integrates Expert Knowledge

FrontRange DSM comes with integrated expert knowledge that greatly simplifies the configuration of hardware and software for you. All necessary settings can be performed using the wizards and the dialog-based script editor of FrontRange Packaging Workbench (roughly 170 commands are available). FrontRange DSM automatically writes all the correct values to the relevant locations in the registry. The parameter handling of FrontRange DSM NetInstall allows the flexible creation of installations, and the technical interdependencies of the packages can be displayed using a component model. The creation of a cross-company, cross-platform software library by FrontRange DSM NetInstall prevents very similar packages or duplicates.

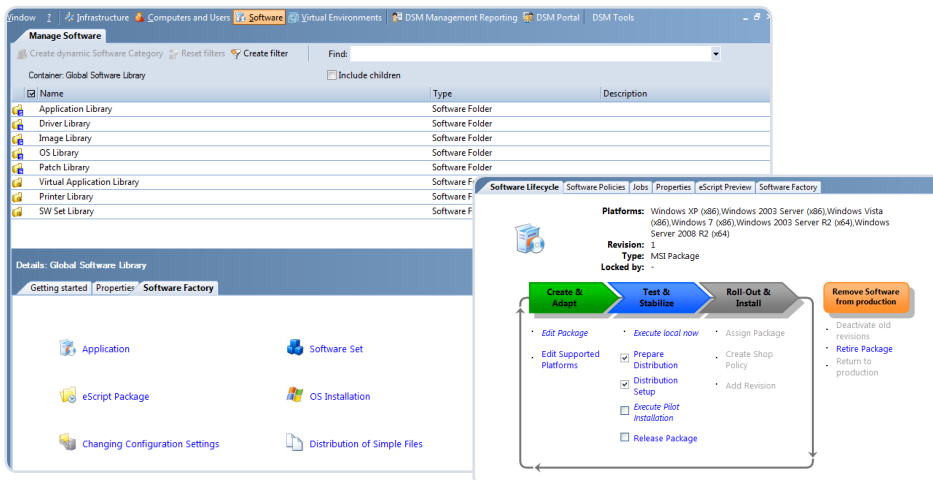


FrontRange DSM unique and out of the box packaging capabilities with intuitive wizards facilitate package creation for applications, operating systems, drivers, and configurations

### Release Management Ensures Up-to-Date End Devices

The release management in FrontRange DSM NetInstall ensures that all your end devices are kept up to date. Once a software program has been released, changes can no longer be made. Of course, an unlimited number of revisions can be made to the software package. Each revision can be linked to a policy of your choice. As soon as a software package is modified, FrontRange DSM NetInstall automatically performs the

update of all relevant end devices, if this is desired. With release management you always have full control of the revision status and you can prove this beyond doubt or revert to old states without hassle. The integrated Management Reporting gives a detailed overview of the Software Rollout Status. Reports can easily be created and forwarded by email to upper management.



Software Factory for the automation of even complex packaging tasks

### SYSTEM REQUIREMENTS

Please refer to the system requirements at [www.fronrange.com/itam/](http://www.fronrange.com/itam/) system-requirements.

### MORE INFORMATION

**Corporate Headquarters**  
 FrontRange Solutions USA Inc.  
 5675 Gibraltar Drive,  
 Pleasanton, CA 94588, USA  
 Tel: +1 925 398 1800  
[www.fronrange.com](http://www.fronrange.com)