

FrontRange™ DSM Personality Migration

Productivity Protection Through Automated User State Migration

powered by Tranxition's Migrate 7™

The user state refers to the files and settings defined by the end user. There are few standards for the storage of user states. The lack of such standards means that considerable effort is required to backup and transfer user states. The resulting failure to make backups means that there is a considerable risk of data being lost. According to IDC, 60 percent of company data is stored locally and is therefore not included in data backups. The complexity of the problem becomes increasingly apparent when operating system migrations like Windows 7 or computer replacements are undertaken. The effort required to provide users with their data following successful installations is often reason enough not to perform a migration or replace computers.

In order to avoid restricting employee productivity and to protect important data, companies require a high-performance personality migration solution for user states. By automating all necessary backup and restoring processes and integrating this solution into the superordinate software management system, IT administrators gain the necessary flexibility to react quickly to hardware and software malfunctions, malware threats, and internal company changes. It is essential to maintain a detailed record of the application data and settings to be backed up in order to establish a basis for standardizing the environment. Particularly in enterprises, the extended functions for storage capacity reduction and data security are of central importance.

Reduction in Downtimes and Support Costs

FrontRange DSM Personality Migration allows you to fully automate the backup and migration of user states for all users on a computer. FrontRange DSM

Personality Migration is deployed and executed in the background ('silently'), so that users never need to interact with the program. The FrontRange DSM Personality Migration technology automatically records all user data and settings, for example desktop layout, personalized adjustments, document templates, network connections as well as files and folder structures. The Registry Selector also takes registry keys and values into account for proprietary applications.

You can choose between local, LAN, WAN or removable media as locations for saving the user state. Various file versions can be recovered. Personalized user environments can therefore be restored in no time at all in the case of malfunctions or in the context of migration projects, thus reducing productivity losses and keeping cost-intensive on-site support to a minimum.

Focus on Enterprise Environments

FrontRange DSM Personality Migration was designed to address the particular concerns related to enterprise migrations and continuity management. The solution features excellent scalability and can be fully automated by means of FrontRange DSM Desktop & Server Management scripts. In addition, FrontRange DSM Personality Migration has extended functionalities predestined for use in enterprise. These allow you to reduce the storage space required for the user state with delta backups which, particularly in large environments, are often essential. In addition, the HTTP support enables data to be stored on web servers without providing access to the company network. Sensitive documents and settings are encrypted at your temporary workstation and migrations to new systems can be restricted by password protection.



KEY BENEFITS

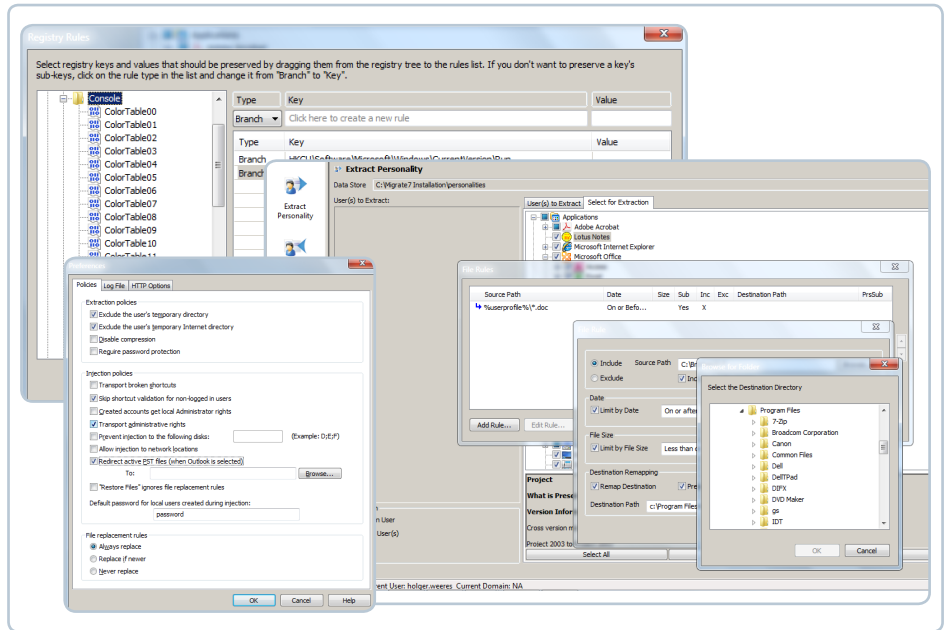
- Smooth migration of personal files and settings even in large environments
- Lowered support costs
- Fast data recovery following malfunctions
- Complete automation of all user state-related tasks
- System standardization
- Protection of sensitive data and settings
- Simple integration in FrontRange Desktop & Server Management

KEY FEATURES

- Automated recording of all user data and settings
- Silent deployment and execution
- Office 2010 Support
- Internet Explorer 8 Support
- VSS (Volume Shadow Copy Service) Support
- Local, LAN, WAN or removable media as storage locations
- Recovery of various file versions
- Delta backups of the user state
- Registry selector for keys and values of proprietary applications
- HTTP support for backup on web servers
- Password-protected file recovery
- Encryption of data at temporary storage locations
- Rule-based migration

Standardization Through Rule-Based Migration

With FrontRange DSM Personality Migration, complicated scripts for migrating user settings are a thing of the past. Even without expert knowledge, just a few mouse clicks are needed to select the users and applications to be recorded by FrontRange DSM Personality Migration. Using predefined and configurable rules, IT administrators can decide exactly which files from the defined applications shall be migrated and where they shall be saved – even for migrations between different operating systems and application versions. Audit logs record the capturing or restoring of all files and settings. This enables you to achieve a standardized environment that is easier and more economical to maintain.



Any number of rules can be defined easily with just a few mouse clicks

Additional Malware Protection

Owing to the ubiquitous threat of viruses, worms, spyware and the like, leading security experts recommend that companies automate processes for deleting hard disks and reinstalling operating systems. By combining FrontRange DSM Personality Migration with its tools for malware analysis, you can achieve an increased level of security and,

at the same time, ensure employee productivity. As soon as a malware infection has been discovered, you can have the anti-virus scanner clean the stored data. With FrontRange DSM, the infected systems are patched in next to no time with a clean operating system and FrontRange DSM Personality Migration automatically restores the personalized

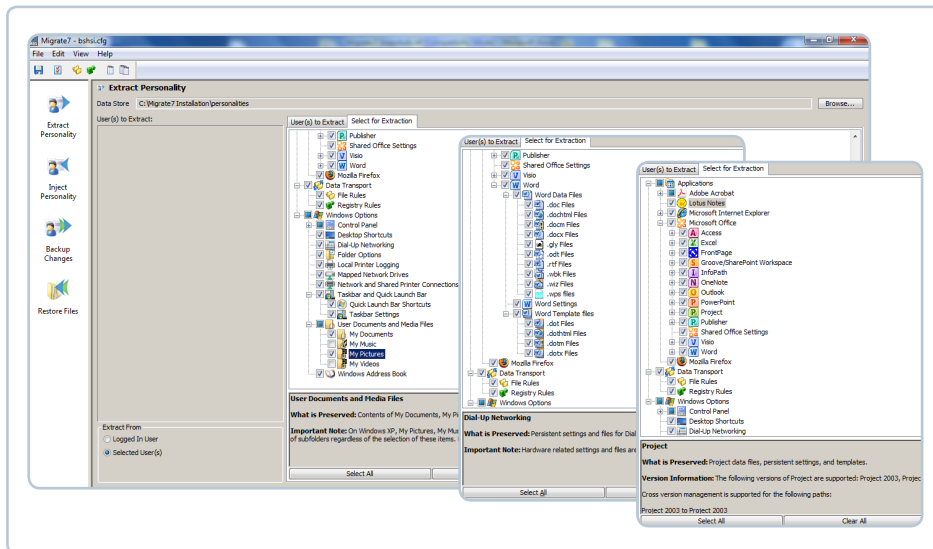
application environment. The scheduled backups provided by FrontRange DSM Personality Migration also form the ideal basis for a routine reinstallation of all systems, which will stifle malware infections at their very outset.

SYSTEM REQUIREMENTS

For a complete list of system requirements please refer to www.fronrange.com/itam/system-requirements

MORE INFORMATION

Corporate Headquarters
 FrontRange Solutions USA Inc.
 5675 Gibraltar Drive,
 Pleasanton, CA 94588
 USA
 Tel: 800.776.7889
 and +1 925 398 1800
www.fronrange.com



Predefined rules for the migration and transfer of user data and settings